

Fernie 2024-2025 Winter Trail Map

(Non-Motorized)



This map is part of the community Winter Trails Collaborative and has been made possible by the work and funding from multiple partners including Tourism Fernie and the Resort Municipality Initiative. Support the local trail groups who maintain grooming and access throughout Fernie! These include Fernie Nordic Society, Fernie Trails Alliance, Coal Creek Heritage Society and Fernie Snowmobile Association.

Lodge Not Open to Public in Winter.



ISLAND LAKE CATSKIING

THUNDER MEADOWS HUT
Managed by the Fernie Trails & Ski Touring Club. Book the hut at FernieTrails.com

LIZARD LAKE

Trail Use Legend

Nordic Only Trail. No Dogs Allowed		Groomed for Fat Biking, Nordic Skiing & Snowshoeing only	
Non-Groomed Multi-Use Trail		No foot traffic	
Multi-Use Groomed		Summer trail only	
Groomed Easy Beaver Multi-Use Trail		Doubletrack	
May not be groomed		Road	
Check TrailForks or FB/FernieFatBike		Road Closed to motorized traffic	
Plowed to pavement trail			
Multi-Use & Motorized Groomed Trail			

Icon Legend

Porta Potty/Outhouse/ Pit Toilet (open 24/7)		Free Public Parking		Hospital	
Public Indoor Washroom (open hours vary)		Off-Leash Dog Park		No Dogs Allowed	
Snowmobile Staging Area		Montane Barn		Hut	
Visitor Info Centre Open 9am-5pm Monday - Saturday Closed Sunday & Holidays		Hotel		Gas Station	
		Information Kiosk			

Land Boundary Legend

BC Provincial Park	
Island Lake Lodge	
Galloway Land	
Fernie Ridge Land	
Parastone Land	
Doman Land	

Parking Details & Etiquette

- Parking areas are indicated on the big map as Please obey all parking signs.
- Parking is limited. Only park where designated. Do not park along main roads, block traffic or park in residential areas.
- All designated parking areas, excluding some at the Base Area at Fernie Alpine Resort, are free of charge to use.
- Please park with common sense and be mindful and respectful of others.
- Parking areas can be busy. Please be cautious, and be safe around vehicles.
- If you don't have to drive to access the trails please don't.
- No overnight parking is allowed anywhere.
- Please keep your dog on a leash while in parking areas.

Know Before You Go

When venturing out in and up the mountains during the winter season be safe, be prepared and tell someone where you're going and when you'll be back. There are many great websites such as AdventureSmart.ca and Avalanche.ca that provide details on how to be safe outdoors during the winter months. Drop by local sport and gear shops for additional advice and needs, visit TourismFernie.com for details and places to stay. Pick up a map and also download the TrailForks App on to your phone and search for Fernie. TrailForks also uses your smart phone's GPS to show you where you are on the winter trails. For snowmobiling details visit FernieSnowmobile.com and for ski touring details visit FernieTrails.com.



Download the TRAILFORKS APP for trail details, GPS navigation data, and user-generated trail condition and grooming updates.



Scan this QR Code with your smart phone camera to access the digital version of this Winter Trail Map!

The Fernie Snowmobile Association (FSA) manages all the snowmobile grooming and access. Visit FernieSnowmobile.com for details. Other winter trail users can use these groomed trails by purchasing an FSA trail pass or membership.

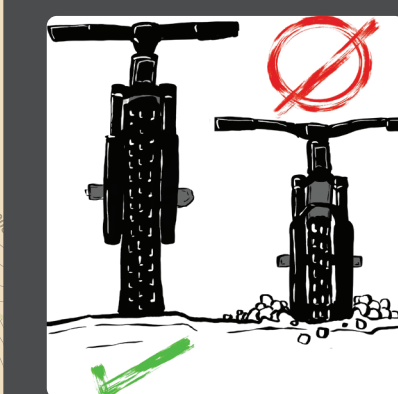
Due to heavy rains and flooding in November 2021, the bridge and parts of the road further up Coal Creek were washed out.

Think Before You Sink

Fernie multi-use groomed trails are maintained by local volunteers for the benefit of everyone and a variety of activities including walking, fat biking, trail running, snowshoeing and xc skiing. To keep the trails in the best shape for everyone please follow the below winter groomed multi-use trail etiquette:



Freshly groomed trails may need a bit of time to set so walkers, fat bikers or runners don't break through, leave bootpack holes or ruts. If this is happening stay to the side of the trail, use a different trail or wait until it's firm.



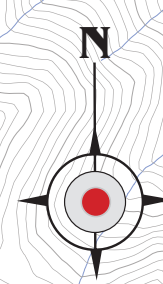
Fat tire bikes are recommended for winter trails. You should have enough flotation and traction that you aren't leaving a rut and you can safely control your bike. See reverse side for winter fat biking etiquette.

Please Clean Up After Your Dog



If your furry friend is with you, please clean up after them and ensure no poo is left on the trails. Fernie has many furry friends and welcomes visitors with dogs too, but please keep them on a leash or, when signs allow, close and under control as many conflicts or incidents can easily happen with other dogs, wildlife or people, especially young kids who can be afraid of dogs.

Call 911 for any emergencies
Please Obey All Posted Signage



Elk Valley Nordic Centre



- Managed by Fernie Nordic Society. Membership or day pass required. Visit FernieNordic.com
- Only XC skiing. No dogs, running, snowshoeing, walking or fat biking.

Fernie Alpine Resort Multi-Use Trails



- Silk, Manchuria and Scandia Trail are groomed and track set for skate and classic skiing. These trails are multi-use as well. Only XC ski in the track.
- Nordic ski, snowshoe and fat bike rentals are available at the base area.

XC Trails at the Golf Course. Managed by Fernie Nordic Society

- Membership or day pass required. Visit FernieNordic.com
- No dogs, walking, snowshoeing, walking or fat biking.

Great Northern & Fernie RV Resort Multi-Use Trails



Winter Trail Map 2024-2025



View Map PDF - FernieWinterTrailMap.com



Support Local & Experience Fernie

Fernie is a community full of history, arts, culture, amazing outdoors and great people. Be in the know on everything Fernie by visiting TourismFernie.com. Support local businesses this season and be sure to purchase local trail passes or donate to the various trail organizations.



Located in the heart of the Canadian Rockies, Fernie is a small mountain town with big mountain views. Located an hour east of Cranbrook, BC and three hours southwest of Calgary, AB.



Support Winter Trails

With hundreds of trails to explore and winter trail use growing in popularity, maintenance needs of those trails grows too. Please support winter trail maintenance and grooming by supporting the below organizations:

- COAL CREEK HERITAGE SOCIETY (CCHS)**
CCHS manages and maintains the groomed cross-country and multi-use (run, fat bike, walk etc) trails at the Montane Trail Network and the Ridgemoor Trail Network. Please donate to help support these trails by using this QR code.
- FERNIE NORDIC SOCIETY (FNS)**
FNS manages and maintains the groomed cross-country ski trails at the Elk Valley Nordic Centre and the Fernie Golf Course. Membership or trail pass is required to use these trails. Use this QR code to purchase.
- FERNIE TRAILS ALLIANCE (FTA)**
FTA builds, maintains and enhances trails through land use agreements with the Crown, BC Parks, Canwell, City of Fernie, Island Lake Lodge and multiple other private land owners to ensure public access year-round. Use this QR code to purchase your Fernie Trails Pass and support the trails the FTA manages.
- FERNIE SNOWMOBILE ASSOCIATION (FSA)**
FSA grooms thousands of kms of trails for sledding annually. Scan this QR Code to purchase a FSA trail day pass or season pass to use their groomed trails.

Elk Valley Nordic Centre Trails

- Bunnyrabbit Loop 0.5km
- JackRabbit Loop 1km
- Cedar Loop 1.2km
- Galloway Loop 2.5km
- Lizard Lookout Hill 0.5km
- The Runt 0.7km
- The Grunt 0.5km
- Lizard Creek Loop 0.9km
- Connector trails

Fernie Alpine Resort Multi-Use Trails

- Timber Landing Loop
- Parking Lot 4
- Double Creek Loop
- Silk Trail 1.9km
- Manchuria 1.9km
- Scandia Loop 4.5km
- Snowmobile Staging Area

XC Trails at the Golf Course. Managed by Fernie Nordic Society

- Great Northern Trail
- Fernie RV Resort
- Maiden Lake
- Golf Course Nordic Ski Trails ~ 5km perimeter loop
- Fairway Drive
- CP Railway Tracks

Trail Conditions & Grooming Reports:

Weather can effect the groomers ability to consistently do their work. Multiple and heavy snow falls may take time to groom and re-groom in some areas. Most groomers are volunteers. Please help keep groomed trails in good condition by adhering to any signs.

Updates on grooming, trail conditions and related updates are provided by each of the trail areas and groups/organizations online.

To access these please visit: FernieTrailConditions.com

Fat Biking Info & Etiquette

Winter Biking Info & Etiquette

Support the local trail groups who maintain grooming and access! Both the Fernie Trails Alliance and Coal Creek Heritage Society groom trails for fat biking / multi-use.

Rentals:

You can rent a fat bike from a variety of bike shops in town or at Fernie Alpine Resort.

Suggested Groomed Trails:

- For beginners, start with the wide flat trails along the river in town - Great Northern Trail, Elk Valley Pathway to James White Park.
- For intermediates, head to Montane, Fernie Ridge, Trail Dogs or Fernie Alpine Resort. Best trail to start with is Montane Blue to Easy Beaver to the Hut and back. If you're looking for a bit harder do Montane Blue full loop or head up into Fernie Ridge. Fernie Alpine Resort's XC trails are used for Fat Biking as well, the start from the parking area to the start of the Silk Trail is a good grunt up, then the rest is fairly mellow.
- For advanced riders, head to Phat Bastard, Red Sonya, Black & Blue Betty. For those interested in black diamond DH trails that will see grooming over winter head to the Morrissey Trails off Cokato Road.

Winter Biking Trail Etiquette:

- Respect and kindness to all trail users and to trail signage. Some trails only allow certain activities please obey posted signage.
- Do not bike on the NORDIC ONLY trails (colour green). These are dedicated to Cross-Country Skiing Only.
- You should have enough flotation so you can travel over snow without leaving a rut.
- You should have sufficient traction that you are able to safely control your bike and ride in a straight line.
- Fat tire bikes are recommended on winter trails.
- For the best flotation and traction, it's all about tire pressure! Tire pressure should usually be between 4-6 PSI for winter biking and sometimes lower. A good practice is to start off each ride with a little more air in your tires than you think you'll need and let air out on the trail depending on the conditions.
- If you are riding a multi-use trail with classic XC ski track set, such as Fernie Alpine Resort XC trails, do not ride on or in the track.
- Yield to all other users. Other users don't have brakes, but you do!

Montane Nordic and Multi-Use

- Montane Nordic
- Montane Blue
- Easy Beaver
- Uprooted
- Montane Nordic
- Montane Blue
- New Roots
- Uprooted
- Roots

Where Should I Go?

To View Trails & Map Online:

Download the Trailforks App. You can also view and download a PDF of this map at FernieWinterTrailMap.com

Recommended by Locals!!

- Beginner/First-Timer Nordic Ski Trails - Fernie Golf Course XC Trails
- Nordic Fitness Challenge - Ski the Elk Valley Nordic Centre Trail Loops to Fernie Alpine Resort and back.
- Snowshoeing in Fernie's Winter Wonderland - Mount Fernie Provincial Park
- Most Rewarding Viewpoint - Montane Hut
- A River Lover's Groomed Multi-Use Trail Experience - Great Northern Trail, Fernie Valley Pathway at Annex Park, to James White Park.
- Toughest Groomed Trail for Fat Biking - Phat Bastard & Mushroom Head
- Best Groomed Trail Loop for Fat Biking - Montane Blue
- Best Multi-Use Family Trail - Easy Beaver
- Best Network of Nordic & Multi-Use Trails - Montane
- Longest There & Back Groomed Multi-Use Trail - Fernie Alpine Resort's Silk Trail & Scandia Trail
- Recommended Run - 13km from Great Northern Trail to James White Park and back. Or the 7km Easy Beaver Trail in Montane to the Hut and back. NOTE: if the groomed trail is too soft please do not run on it until it's hardened.
- Looking for Something Different? - Do it at night with headlamps and lights! Note - no trails in Fernie are lit for night use, so plan ahead and play safe.

Fernie Ridge Trails



- Trails in the Fernie Ridge area (shaded blue area) are maintained by the Coal Creek Heritage Society. These trails are privately owned trails by Pollyco.
- Please support trail access, maintenance and grooming by donating to the Coal Creek Heritage Society.

Fernie Ridge Trails

- Great Northern Trail
- Fernie RV Resort
- Maiden Lake
- Old Stumpy
- Oh Deer
- Four Corners
- Deadfall Downhill
- Broken Deer
- Broken Deer
- R-Trail
- Deadfall
- Kid's Stuff
- Sidewinder
- Queen V
- Eco-Terrist
- Eric's Trail
- Rainer's Way
- Kiddy Up
- Space Unicorn
- Coal Creek Heritage Trail / TCT

Did you know? You can easily connect between Montane & Fernie Ridge by the Montane Barn bridge.

Groomed for Fat Biking Nordic Skiing & Snowshoeing only. No foot traffic